

# VISIO 100

MOBILE GLASS WALL

ESPERO



# DO MORE WITH M<sup>2</sup>

Mobile walls add value to the available space in interiors. With an extensive programme of mobile wall systems, Espero can always provide the right solution for creating flexible layouts, based on the three important pillars on which the company was founded: functionality, aesthetics and durability.

Espero is a Dutch supplier and manufacturer, and the market leader in the Benelux, which is partly due to our 75 years of experience. Espero's mobile wall systems are used all over the world in attractive office interiors (in the public and private sector), schools, restaurants and hotels, exhibition and event halls, hospitals and care centres, churches and mosques; large or small projects, new construction, renovations and alterations. Espero offers architects a limitless choice of applications and finishes for total creative freedom. Our comprehensive specifications service and expert advisers provide additional support in design development.

End users praise the reliability, the ease of use and the high level of sound insulation of the walls that is available whenever necessary in practice.

**Visio 100:** high sound insulation rating, maximum transparency and yet extremely flexible; Espero's new glass panel wall, the Visio 100 (Elite), has everything. The wall consists of separate panels that form a flat glass surface when connected together. The panels consist of a selfsupporting aluminium frame with internal steel bracing, in which the glazing is placed. The glazing unit is mounted in rubber seals in an aluminium wall profile. Espero's patented quick-locking mechanism guarantees simple and smooth operation. The Visio 100 SA (semi-automatic version) provides even greater ease of use.

Two versions of the wall are available: Visio 100 and Visio 100 Elite. Depending on the type of glazing used, the sound insulation rating is  $R_w = 42 \text{ dB}$  to  $50 \text{ dB}$  (lab. tested).

Espero is ISO 9001 and 14001 certified (the international standards for quality and environmental management systems). Striving to achieve maximum quality and causing as little environmental impact as possible are highly valued in all layers of the organisation.

A word cloud consisting of the words "MOBILE" and "WALLS" repeated many times. The words are arranged in a dense, overlapping pattern, with some words appearing larger and more prominent than others. The colors are primarily black and dark grey, with some lighter grey and white words interspersed. The overall shape is roughly rectangular, with the words filling the space in a chaotic yet rhythmic manner.

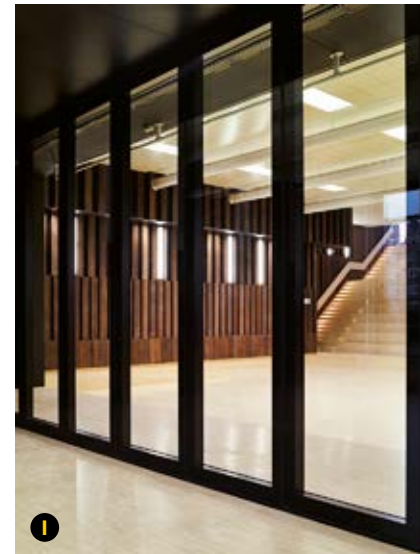
# ESPERO





Brede School Houthaven is a carbon-neutral multifunctional facility that accommodates, among other things, two primary schools, a day-care centre, an out-of-school care centre and playgroups. Because most of the interior (designed by Marlies Rohmer) can be flexibly partitioned, the building can be optimally utilised and various activities can be interconnected whilst retaining their own functionality. In this way, the two primary schools decided to place their assembly halls next to each other separated by an Espero Visio 100 Elite mobile glass panel wall, which allows a one large open space to be created for special activities.

# VISIO 100



1 Visio 100 Elite two-point wall set up between two assembly halls

2 door handle, perfection down to the finest details

3 simple operation with the patented quick-locking mechanism

4 the floor connection of the panels



# VISIO 100

Two versions of Espero's glass mobile panel wall are available: The Visio 100 and Visio 100 Elite.

The main difference is the finishing of the glass. The Visio 100 has transparent glazing without a frame and the Visio 100 Elite is fitted with a frame-lacquered glazing.

The Visio 100 with completely transparent glass and cassettes made from anodised aluminium has a modern industrial appearance. The basic and end-panels are finished with glass, the other panels in a finish of choice (similar to the Sonico 100).

The cassettes, which house the construction and operating mechanism, and the aluminium wall profiles can be optionally supplied in a RAL colour of choice.

The Visio 100 Elite is fitted with frame-lacquered glazing in an RAL colour of choice. The basic, door, end and communication panels are supplied with frame-lacquered glazing (transparent); the other types of panels are supplied with painted glass (non-transparent). This finishing makes the wall look even more elegant.

The cassettes and wall profiles can be optionally supplied in any RAL colour if required.

5 the look of the profiles, operating key

6 Visio 100: completely transparent glass and natural aluminium cassette

7 Visio 100: completely transparent glass and cassette in colour (option)

8 Visio 100 Elite: glass with blue painted frame and natural aluminium cassette

9 Visio 100 Elite: glass with blue painted frame and blue painted cassette





# VISIO 100



The halls in the Brede School Houthaven in Amsterdam can be partitioned in various ways by using mobile walls. The school's architecture enables various activities to take place before, during and after the official lessons, and is also intended to facilitate cooperation between different groups of users.

For the mobile walls in the corridors, Visio 100 Elite glass walls were deliberately chosen in order to provide sufficient daylight. The classrooms are separated by Espero Sonico 110 walls

Espero's patented quick-locking mechanism guarantees ultra-smooth operation for the end users. The operating key only has to be given half a turn to unlock or secure the panels in position. Once unlocked, the separate panels can be quickly and noiselessly moved along the overhead aluminium track and can be easily set up or stowed away.

The sound insulation is guaranteed by lockable operation seals located at the top and bottom of the panels. The vertical profiles are fitted with acoustic rubber seals.





The eye-catching town hall in Hardenberg is one of the most sustainable government buildings in the Netherlands. The design, the applied state-of-the-art engineering techniques and use of natural resources contribute positively to the building's low energy consumption.

One aspect people always notice when entering the building is the open view of the main council chamber. Espero's mobile glass panel wall enables direct contact between citizens and government. The high sound insulation rating of the wall makes it possible to carry out various activities on both sides of the glass without having to turn down the volume.

# VISIO 100



**10** wall between the public area and the council chamber

**11** moving the panels

**12** panels with a two-point suspension parked in an alcove

**13** council chamber

GEWENTEHUIS HARDENBERG (NL)





# VISIO 100

All glass finishes customarily used in interior design can be applied to the Visio 100 and Visio 100 Elite, for example, etching, sandblasting or colouring. Prints or foil can also be placed on the glass without problems.

The glass for a Visio 100 is removable, which means it can also be cleaned on the inside. The possible options include built-in venetian blinds.

**14** built-in venetian blinds

**15** operating button for venetian blinds

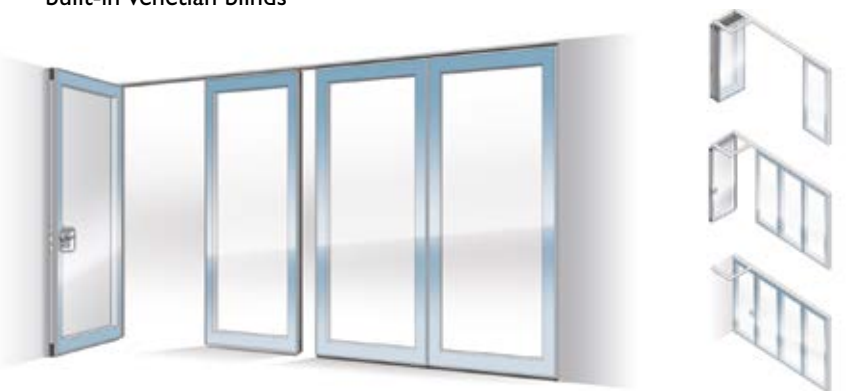


## Key features and advantages:

- optimal transparency
- individual mobile panels with numerous set-up and positioning possibilities
- panels can be individually locked in position for maximum stability and safety
- simple and noiseless operation
- sound insulation rating from 42 dB and 50 dB (laboratory tested)
- removable glass (not for Visio 100 Elite)
- no width limit
- the track can be completely integrated in a ceiling system

## Options:

- semi-automatic operation
- built-in venetian blinds



ESPERO



# VISIO 100

TYPE	VISIO 100				VISIO 100 Elite			
Use	Robust version with average sound insulation ratings, suitable for all situations in which transparency is required.							
Panel dimensions:								
Thickness	107 mm							
Height	maximum 3,500 mm, other dimensions on request							
Width	700 – 1,240 mm							
Frame construction	Self-supporting aluminium frame, consisting of solid aluminium profiles with internal steel bracing. The glazing unit is mounted in rubber seals in the aluminium frame. Internal aluminium cassette which houses the construction and operating mechanism.							
Panel appearance	Visible horizontal and vertical aluminium profile. Available in any preferred RAL colour. Basic and end panels in glass, other panels in finish of choice (similar to the Sonico 100). Glass transparent, without frame.				Visible horizontal and vertical aluminium profile. Available in any preferred RAL colour. Basic, door, communication and end panels with frame-lacquered glass (transparent), other panels in glass (non-transparent). Glass with lacquered frame.			
Cassettes	Standard anodised aluminium.				Available in any preferred RAL colour.			
Glazing	6 mm toughened glass (NEN-EN 12150) or 8 mm layered glass (NEN-EN ISO 12543)							
Sound insulation rating (lab. tested)	42 dB	46 dB	48 dB	50 dB	42 dB	46 dB	48 dB	50 dB
Weight	44 kg/m <sup>2</sup>	44 kg/m <sup>2</sup>	54 kg/m <sup>2</sup>	54 kg/m <sup>2</sup>	44 kg/m <sup>2</sup>	44 kg/m <sup>2</sup>	54 kg/m <sup>2</sup>	54 kg/m <sup>2</sup>
Panel interconnect	Dual construction based on the tongue and groove principle: all the panels have a male/female profile with a magnetic strip to ensure consistent, effective sound insulation.							
Top and bottom panel connection	Solid aluminium operation seals fitted with rubber sealing profiles.							
Operating mechanism	The quick-locking mechanism is very easy to use (half turn) and the patented operating sequence for the telescopic panel (= end/closing panel) means the wall can be set up and put away quickly and smoothly.							
Semi-automatische opration	The locking mechanism is operated by pressing a button that pulls out or pushes in the operation seals automatically.							
Rail	Solid aluminium profile (technically anodised colourless), for the single-point track measuring 110x78 mm (wxh) and the two-point track measuring 110x98 mm (wxh). Can be painted in any RAL colour if required.							
Wheels / Trolleys	Bearing-mounted with wear-resistant plastic running surfaces that ensure the panels move smoothly and quietly. Single points: max. 240 kg panel weight, two-point: max. 400 kg panel weight.							
Static behaviour	The panels are top-hung in the track and must not be subjected to any external loads.							
Environmental conditions	Only suitable for indoor applications. Maximum relative humidity 60%.							

Other specifications available on request. Espero reserves the right to make changes without prior notification. For the most recent version, go to: [www.espero.nl](http://www.espero.nl).

telescopic panel    basic panel    door panel    adjacent panel    communication panel

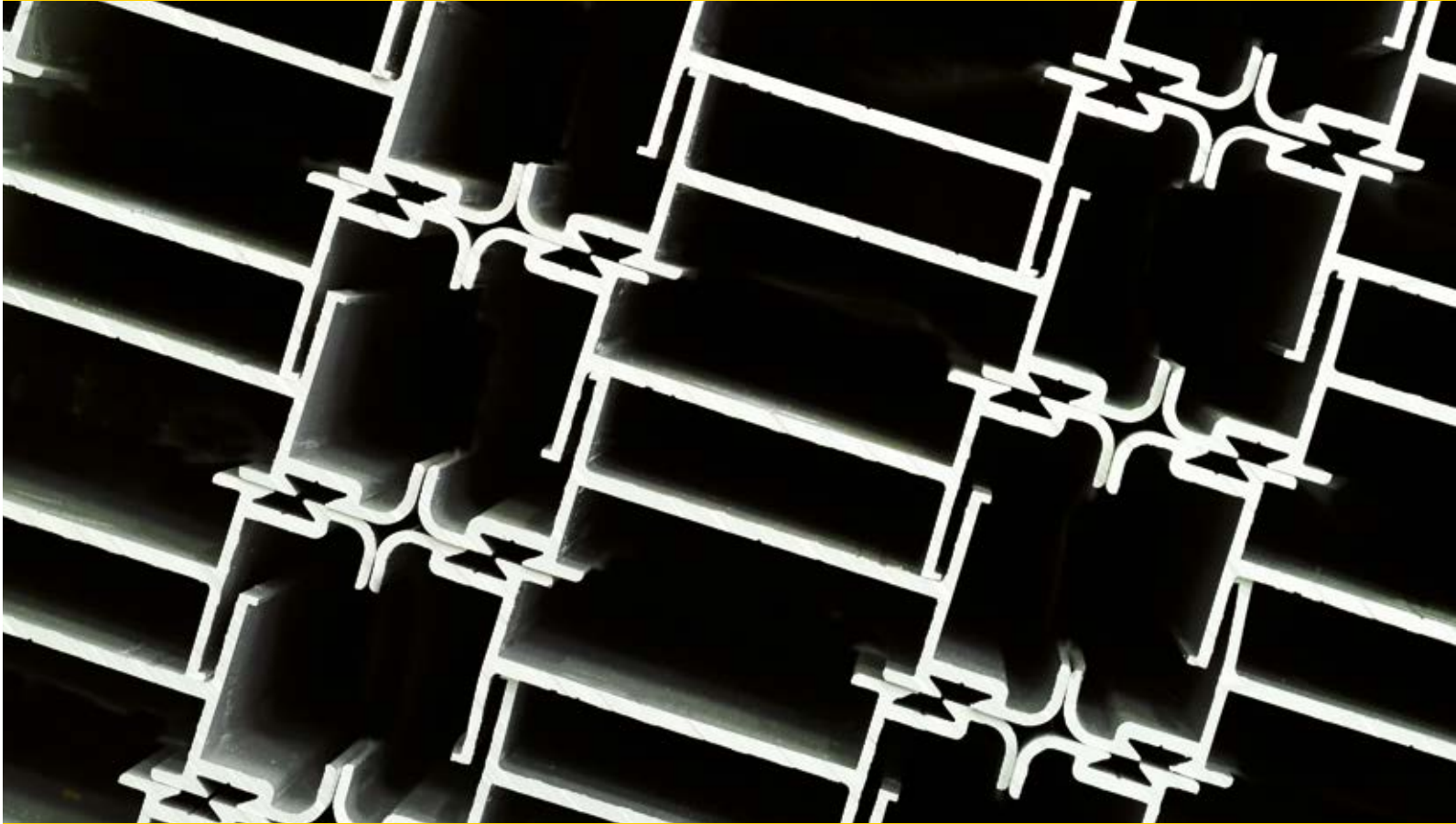


VISIO 100

telescopic panel    basic panel    door panel    adjacent panel    communication panel



VISIO 100 Elite



Espero prioritises customer satisfaction. The production process, modern advanced machinery, the product quality, the expertise and professionalism of our employees; everything has been designed to live up to and, wherever possible, to exceed the expectations of our customers.

By maintaining frequent and intensive contact with clients and suppliers, we can quickly and flexibly respond to new wishes and requirements with innovative products. Our employees work in a pleasant and safe environment in the office, in the factory and on the road. They receive the right support to encourage their personal development and take (additional) training courses in order to guarantee the high quality and excellent service for which Espero is known now and in the future.

ESPERO



# ESPERO

## MOBILE WALLS



The mark of  
responsible forestry  
FSC® C102608

Enquire about our FSC certified  
products.

*visiting adress*

**Espero BV**  
Sluisweg 26-28  
5145 PE Waalwijk  
The Netherlands

*postal adress*

**Espero BV**  
Postbus 576  
5140 AN Waalwijk  
The Netherlands

**t** +31 (0)416 338955  
**f** +31 (0)416 332635  
**e** [info@espero.nl](mailto:info@espero.nl)  
**i** [www.espero.nl](http://www.espero.nl)

Ask for the documentation for more  
information about our other wall systems:  
Sonico, Visio 100, Visio and Uno&Duplo.  
Espero is the exclusive agent for Skyfold  
full automatic vertical wall systems in the  
Netherlands.

